

Creativity is our human spirit in action



MADE51
CRAFTED BY REFUGEES



WHOLESALE CATALOGUE 2022

Valid from June 2022 to December 2022

BRINGING BEAUTIFUL, REFUGEE-MADE PRODUCTS, THAT MERGE CONTEMPORARY DESIGN WITH TRADITIONAL SKILLS, TO A GLOBAL MARKET.

As of June 2022 over 100 million people have been forced to flee their homes due to conflict, persecution or disaster. Amongst this vast group of people there are incredible artisans that possess the dedication, skills and heritage to create objects of true beauty. Things that can fill our homes with life and joy.

MADE51 is a global initiative launched by UNHCR, the UN Refugee Agency, to offer refugees the opportunity to utilize their artisanal skills and heritage to rebuild their livelihoods. In MADE51, UNHCR connects refugees with local social enterprise partners who support the design, development and marketing of the distinct refugee-made product lines that make up the collection.

MADE51 offers refugee artisans an opportunity to earn an income while in the midst of displacement. For consumers, these pieces showcase craftsmanship and heritage, while expressing solidarity in the face of unimaginable hardship.



HOW TO SOURCE THE MADE51 COLLECTION

This wholesale catalogue is intended for retailers interested in sourcing the MADE51 collection.

Buyers can place wholesale orders directly with the exporting enterprises that are listed here. These social enterprises work directly with refugee artisan groups using Fair Trade principles and UNHCR protection standards. Contact information is listed for each social enterprise.

MADE51 materials are available for retailers to use for visual merchandising.

Orders from across the collection can be consolidated through UNHCR's commercial partner for MADE51. Please contact us at info@made51.org for more details.

This catalogue is valid through December 2022. All prices are listed in FOB USD unless otherwise noted. Lead times are typically 2-3 months but will vary based on products. Standard payment terms are 50% advanced payment upon order and 50% payment upon delivery. For inquiries and order placement, please contact: info@made51.org.



Home Decor





**BLUE RECTANGLE
PUKHTADOZI CUSHION**

- Embroidery / Linen, cotton thread
- Available in green on grey base and red on brown base
- 60cm x 30cm
- \$14.30 (FOB)
- Social enterprise: Artisan Links
- Made in: Pakistan
- Refugee origin: Afghanistan



BLUE SMALL BENRI CUSHION

- Embroidery / Linen, cotton thread
- 25cm x 25cm
- \$15.50 (FOB)
- Social enterprise: Artisan Links
- Made in: Pakistan
- Refugee origin: Afghanistan



**BLUE LARGE PUKHTADOZI
CUSHION**

- Embroidery / Linen, cotton thread
- Available in green on grey base and red on brown base
- 50cm x 50cm
- \$30.00 (FOB)
- Social enterprise: Artisan Links
- Made in: Pakistan
- Refugee origin: Afghanistan



**YELLOW MEDIUM BENRI
CUSHION**

- Embroidery / Linen, cotton thread
- 45cm x 45cm
- \$30.00 (FOB)
- Social enterprise: Artisan Links
- Made in: Pakistan
- Refugee origin: Afghanistan



PINK SMALL BENRI CUSHION

- Embroidery / Linen, cotton thread
- 25cm x 25cm
- \$15.50 (FOB)
- Social enterprise: Artisan Links
- Made in: Pakistan
- Refugee origin: Afghanistan



PINK MEDIUM BENRI CUSHION

- Embroidery / Linen, cotton thread
- 45cm x 45cm
- \$30.00 (FOB)
- Social enterprise: Artisan Links
- Made in: Pakistan
- Refugee origin: Afghanistan



GREEN SMALL TARSHUMAR CUSHION

- Embroidery / Linen, cotton thread
- 25cm x 25cm
- \$20.50 (FOB)
- Social enterprise: Artisan Links
- Made in: Pakistan
- Refugee origin: Afghanistan



GREEN LARGE TARSHUMAR CUSHION

- Embroidery / Linen, cotton thread
- 50cm x 50cm
- \$37.00 (FOB)
- Social enterprise: Artisan Links
- Made in: Pakistan
- Refugee origin: Afghanistan



GREEN RECTANGLE KANDAHARI FLOWER CUSHION

- Embroidery / Linen, cotton thread
- 60cm x 30cm
- \$15.50 (FOB)
- Social enterprise: Artisan Links
- Made in: Pakistan
- Refugee origin: Afghanistan



GREEN MEDIUM KANDAHARI CUSHION

- Embroidery / Linen, cotton thread
- 45cm x 45cm
- \$39.00 (FOB)
- Social enterprise: Artisan Links
- Made in: Pakistan
- Refugee origin: Afghanistan



RECTANGLE EYE CUSHION

- Embroidery / Wool, cotton thread
- 30cm x 60cm
- \$18.50 (FOB)
- Social enterprise: Artisan Links
- Made in: Pakistan
- Refugee origin: Afghanistan



LARGE EYE CUSHION

- Embroidery / Wool, cotton thread
- 50cm x 50cm
- \$20.00 (FOB)
- Social enterprise: Artisan Links
- Made in: Pakistan
- Refugee origin: Afghanistan



KANDAHARI DINNER NAPKIN

- Embroidery / Linen
- 40cm x40cm
- \$5.00 (FOB)
- Social enterprise: Artisan Links
- Made in: Pakistan
- Refugee origin: Afghanistan



KANDAHARI PLACEMAT

- Embroidery / Linen
- 46cm x35cm
- \$8.25 (FOB)
- Social enterprise: Artisan Links
- Made in: Pakistan
- Refugee origin: Afghanistan



PUKHTADOZI BIRD WALL ART

- Embroidery / Linen
- 25cm x 25cm
- \$10.00 (FOB)
- Social enterprise: Artisan Links
- Made in: Pakistan
- Refugee origin: Afghanistan



MINI ORANGE PLATEAU

- Hand dye & weaving / Sweetgrass, sisal
- Ø20cm x H6cm
- \$12.00 (Wholesale USA)
- Social enterprise: Indego Africa
- Made in: Rwanda
- Refugee origin: Burundi



MINI MAUVE PLATEAU

- Hand dye & weaving / Sweetgrass, sisal
- Ø20cm x H6cm
- \$12.00 (Wholesale USA)
- Social enterprise: Indego Africa
- Made in: Rwanda
- Refugee origin: Burundi



MINI NEON PLATEAU

- Hand dye & weaving / Sweetgrass, sisal
- Ø20cm x H6cm
- \$12.00 (Wholesale USA)
- Social enterprise: Indego Africa
- Made in: Rwanda
- Refugee origin: Burundi



Mah, a young Afghan woman living in Pakistan, has a way to earn an income using her heritage skills. Working with MADE51 partner, Artisan Links, she creates intricately embroidered cushion covers, purses, shawls and holiday ornaments.

©UNHCR/Saiyna Bashir





MINI CITRON SWIRL

- Hand dye & weaving / Sweetgrass, sisal
- Ø20cm x H6cm
- \$12.00 (Wholesale USA)
- Social enterprise: Indego Africa
- Made in: Rwanda
- Refugee origin: Burundi



CITRON SWIRL PLATEAU

- Hand dye & weaving / Sweetgrass, sisal
- Ø30cm x H7.5cm
- \$30.00 (Wholesale USA)
- Social enterprise: Indego Africa
- Made in: Rwanda
- Refugee origin: Burundi



CITRON FORM PLATEAU

- Hand dye & weaving / Sweetgrass, sisal
- Ø30cm x H7.5cm
- \$30.00 (Wholesale USA)
- Social enterprise: Indego Africa
- Made in: Rwanda
- Refugee origin: Burundi



OLIVE FORM PLATEAU

- Hand dye & weaving / Sweetgrass, sisal
- Ø30cm x H7.5cm
- \$30.00 (Wholesale USA)
- Social enterprise: Indego Africa
- Made in: Rwanda
- Refugee origin: Burundi



**ABSTRACT FORM PLATEAU
LAVENDER**

- Hand dye & weaving / Sweetgrass, sisal
- Ø30cm x H7.5cm
- \$30.00 (Wholesale USA)
- Social enterprise: Indego Africa
- Made in: Rwanda
- Refugee origin: Burundi



CITRON BOLT PLATEAU

- Hand dye & weaving / Sweetgrass, sisal
- Ø30cm x H7.5cm
- \$30.00 (Wholesale USA)
- Social enterprise: Indego Africa
- Made in: Rwanda
- Refugee origin: Burundi



STATIC PLATEAU SALMON

- Hand dye & weaving / Sweetgrass, sisal
- Ø30cm x H7.5cm
- \$30.00 (Wholesale USA)
- Social enterprise: Indego Africa
- Made in: Rwanda
- Refugee origin: Burundi



SALMON PLATEAU

- Hand dye & weaving / Sweetgrass, sisal
- Ø30cm x H7.5cm
- \$30.00 (Wholesale USA)
- Social enterprise: Indego Africa
- Made in: Rwanda
- Refugee origin: Burundi



ABSTRACT FORM PLATEAU WHITE

- Hand dye & weaving / Sweetgrass, sisal
- Ø30cm x H7.5cm
- \$30.00 (Wholesale USA)
- Social enterprise: Indego Africa
- Made in: Rwanda
- Refugee origin: Burundi



AKEZA PLATEAU BLACK

- Hand dye & weaving / Sweetgrass, sisal
- Available in light pink
- Ø30cm x H7.5cm
- \$30.00 (Wholesale USA)
- Social enterprise: Indego Africa
- Made in: Rwanda
- Refugee origin: Burundi



GEOMETRIC PLATEAU

- Hand dye & weaving / Sweetgrass, sisal
- Ø30cm x H7.5cm
- \$30.00 (Wholesale USA)
- Social enterprise: Indego Africa
- Made in: Rwanda
- Refugee origin: Burundi



MUJERES CUSHION

- Patchwork / Natural cotton canvas, upcycled fabric, tagua seed buttons
- Patchwork fabric colours will vary
- 50cm x 50cm
- \$26.90 (FOB)
- Social enterprise: Kayamamas
- Made in: Ecuador
- Refugee artisan origin: Venezuela



CREAR CUSHION

- Patchwork / Natural cotton canvas, upcycled fabric, tagua seed buttons
- Patchwork fabric colours will vary
- 50cm x 50cm
- \$26.90 (FOB)
- Social enterprise: Kayamamas
- Made in: Ecuador
- Refugee artisan origin: Venezuela



NOSTALGIA CUSHION

- Patchwork / Natural cotton canvas, upcycled fabric, tagua seed buttons
- Patchwork fabric colours will vary
- 50cm x 50cm
- \$26.90 (FOB)
- Social enterprise: Kayamamas
- Made in: Ecuador
- Refugee artisan origin: Venezuela



LIBERTAD TAPESTRY

- Patchwork / Natural cotton canvas, upcycled fabric, tagua seed buttons
- Patchwork fabric colours will vary
- 30cm x 60cm
- \$19.87 (FOB)
- Social enterprise: Kayamamas
- Made in: Ecuador
- Refugee artisan origin: Venezuela



GEOMETRIC SYMBOLS CUSHION

- Embroidery / Fine muslin, cotton
- 40.5cm x 40.5cm
- \$23.00 (FOB)
- Social enterprise: Koel
- Made in: Pakistan
- Refugee artisan origin: Afghanistan



GEOMETRIC SHAPES CUSHION

- Embroidery / Handspun cotton
- 40.5cm x 40.5cm
- \$23.00 (FOB)
- Social enterprise: Koel
- Made in: Pakistan
- Refugee artisan origin: Afghanistan



FLORAL CUSHION

- Embroidery / Handspun cotton
- 40.5cm x 40.5cm
- \$23.00 (FOB)
- Social enterprise: Koel
- Made in: Pakistan
- Refugee artisan origin: Afghanistan



LEAF PLACEMAT

- Embroidery / Cotton
- 36cm x 50cm
- \$9.00 (FOB)
- Social enterprise: Koel
- Made in: Pakistan
- Refugee artisan origin: Afghanistan



FLORAL PLACEMAT

- Embroidery / Cotton
- 36cm x 50cm
- \$9.00 (FOB)
- Social enterprise: Koel
- Made in: Pakistan
- Refugee artisan origin: Afghanistan



BLUE LATU CUSHION

- Shibori dye / Cotton
- Available in red and green
- 50cm x 50cm
- \$15.00 (Ex works)
- Social enterprise: RefuSHE
- Made in: Kenya
- Refugee origin: DRC, Ethiopia, Somalia and South Sudan



LATU TEA TOWEL

- Shibori dye / Cotton
- Available in blue, red and green
- 30cm x 70cm
- \$7.00 (Ex works)
- Social enterprise: RefuSHE
- Made in: Kenya
- Refugee origin: DRC, Ethiopia, Somalia and South Sudan



GREY AND WHITE BEADED BOWL

- Beading / Glass beads
- Ø16cm x H7cm
- \$18.50 (Ex works)
- Social enterprise: Roots
- Made in: South Sudan
- Refugee origin: Internally displaced South Sudanese



GOLD AND WHITE BEADED BOWL

- Beading / Glass beads
- Ø16cm x H7cm
- \$18.50 (Ex works)
- Social enterprise: Roots
- Made in: South Sudan
- Refugee origin: Internally displaced South Sudanese



BEADED WALL HANGING

- Beading / Glass beads
- Available in multiple colours
- W14cm x H35cm
- \$34.04 (Ex works)
- Social enterprise: Roots
- Made in: South Sudan
- Refugee origin: Internally displaced South Sudanese



WHITE MANTAPALA CARVED KUBA POT

- Weaving & carving / Palm, wood
- 11cm x 12cm
- \$14.00 (FOB)
- Social Enterprise: Tribal Textiles Zambia
- Made in: Zambia
- Refugee Origin: DRC



YELLOW MANTAPALA CARVED KUBA POT

- Weaving & carving / Palm, wood
- 11cm x 12cm
- \$14.00 (FOB)
- Social Enterprise: Tribal Textiles Zambia
- Made in: Zambia
- Refugee Origin: DRC



MULTICOLOUR MANTAPALA CARVED KUBA POT

- Weaving & carving / Palm, wood
- 11cm x 12cm
- \$14.00 (FOB)
- Social Enterprise: Tribal Textiles Zambia
- Made in: Zambia
- Refugee Origin: DRC



YELLOW MANTAPALA WOVEN FRINGE POT

- Weaving / Palm
- 12cm x 12 cm
- \$4.70 (FOB)
- Social Enterprise: Tribal Textiles Zambia
- Made in: Zambia
- Refugee Origin: DRC



MULTICOLOUR MANTAPALA WOVEN FRINGE POT

- Weaving / Palm
- 18cm x 18cm
- \$7.30 (FOB)
- Social Enterprise: Tribal Textiles Zambia
- Made in: Zambia
- Refugee Origin: DRC



KUBA SHAPES MANTAPALA WOVEN FRINGE POT

- Weaving / Palm
- 24cm x 24cm
- \$9.00 (FOB)
- Social Enterprise: Tribal Textiles Zambia
- Made in: Zambia
- Refugee Origin: DRC



SMALL MANTAPALA WALL BAG

- Weaving / Palm, leather
- 15cm x 18cm x 4cm
- \$7.60 (FOB)
- Social Enterprise: Tribal Textiles Zambia
- Made in: Zambia
- Refugee Origin: DRC



MEDIUM MANTAPALA WALL BAG

- Weaving / Palm, leather
- 18cm x 24cm x 6cm
- \$10.00 (FOB)
- Social Enterprise: Tribal Textiles Zambia
- Made in: Zambia
- Refugee Origin: DRC



LARGE MANTAPALA WALL BAG

- Weaving / Palm, leather
- 21cm x 30cm x 8cm
- \$11.90 (FOB)
- Social Enterprise: Tribal Textiles Zambia
- Made in: Zambia
- Refugee Origin: DRC



MANTAPALA KUBA WALL HANGING

- Weaving / Palm
- S: 18cm x 50cm / M: 18cm x 100cm / L: 18cm x 150cm
- \$14.40 / \$18.60 / \$42.00 (FOB)
- Social Enterprise: Tribal Textiles Zambia
- Made in: Zambia
- Refugee Origin: DRC



BLUE AND PLUM KAYIN POM POM CUSHION

- Handloom weaving / Naturally dyed, hand-woven cotton
- 40cm x 40cm
- \$18.36 (Ex works)
- Social enterprise: Weave
- Made in: Thailand
- Refugee origin: Myanmar



Two Burundian artisans weaving baskets with hand-dyed sweetgrass and sisal. These artisans work with MADE51 partner Indego Africa in Mahama Refugee Camp in Rwanda. Indego Africa / B. Barb





**BLUE AND PLUM KAYIN POM
POM NECK PILLOW**

- Handloom weaving / Naturally dyed, hand-woven cotton
- L40cm x Ø15cm
- \$17.31 (Ex works)
- Social enterprise: Weave
- Made in: Thailand
- Refugee origin: Myanmar



BLACK URU WALL BASKET

- Weaving / Papyrus, star grass, recycled grain sacks, cotton thread
- S: Ø30cm / M: Ø40cm / L: Ø50cm
- \$11.50 / \$17 / \$24.50 (FOB)
- Social enterprise: WomenCraft
- Made in: Tanzania
- Refugee origin: Burundi



BLUE URU WALL BASKET

- Weaving / Papyrus, star grass, recycled grain sacks, cotton thread
- S: Ø30cm / M: Ø40cm / L: Ø50cm
- \$11.50 / \$17 / \$24.50 (FOB)
- Social enterprise: WomenCraft
- Made in: Tanzania
- Refugee origin: Burundi



BLACK INYABU WALL BASKET

- Weaving / Papyrus, star grass, recycled grain sacks, cotton thread
- S: Ø30cm / M: Ø40cm / L: Ø50cm
- \$11.50 / \$17 / \$24.50 (FOB)
- Social enterprise: WomenCraft
- Made in: Tanzania
- Refugee origin: Burundi



BLUE INYABU WALL BASKET

- Weaving / Papyrus, star grass, recycled grain sacks, cotton thread
- S: Ø30cm / M: Ø40cm / L: Ø50cm
- \$11.50 / \$17 / \$24.50 (FOB)
- Social enterprise: WomenCraft
- Made in: Tanzania
- Refugee origin: Burundi



BLACK IKIBA WALL BASKET

- Weaving / Papyrus, star grass, recycled grain sacks, cotton thread
- S: Ø30cm / M: Ø40cm / L: Ø50cm
- \$11.50 / \$17 / \$24.50 (FOB)
- Social enterprise: WomenCraft
- Made in: Tanzania
- Refugee origin: Burundi



BLUE IKIBA WALL BASKET

- Weaving / Papyrus, star grass, recycled grain sacks, cotton thread
- S: Ø30cm / M: Ø40cm / L: Ø50cm
- \$11.50 / \$17 / \$24.50 (FOB)
- Social enterprise: WomenCraft
- Made in: Tanzania
- Refugee origin: Burundi



URU KITWARO STORAGE BASKET

- Weaving / Papyrus, star grass, recycled grain sacks, cotton thread
- Available in blue
- XS: Ø12cm x H24cm / S: Ø16cm x H30cm / L: Ø20cm x H36cm / XL: Ø24cm x H42cm
- \$8.00 / \$14.00 / \$21.00 / \$29.00 (FOB)
- Social enterprise: WomenCraft
- Made in: Tanzania
- Refugee origin: Burundi



URU KATAKURU STORAGE BASKET

- Weaving / Papyrus, star grass, recycled grain sacks, cotton thread
- Available in black
- S: Ø10cm x H10cm / M: Ø18cm x H18cm / L: Ø25cm x H30cm
- \$4.80 / \$10.80 / \$21.60 (FOB)
- Social enterprise: WomenCraft
- Made in: Tanzania
- Refugee origin: Burundi



INYABU KATAKURU STORAGE BASKET

- Weaving / Papyrus, star grass, recycled grain sacks, cotton thread
- Available in black
- S: Ø10cm x H10cm / M: Ø18cm x H18cm / L: Ø25cm x H30cm
- \$4.80 / \$10.80 / \$21.60 (FOB)
- Social enterprise: WomenCraft
- Made in: Tanzania
- Refugee origin: Burundi



IKIBA KATAKURU STORAGE BASKETS

- Weaving / Papyrus, star grass, recycled grain sacks, cotton thread
- Available in black
- S: Ø10cm x H10cm / M: Ø18cm x H18cm / L: Ø25cm x H30cm
- \$4.80 / \$10.80 / \$21.60 (FOB)
- Social enterprise: WomenCraft
- Made in: Tanzania
- Refugee origin: Burundi



URU GLASI COASTERS, SET OF 4

- Weaving / Papyrus, star grass, recycled grain sacks, cotton thread
- Available in blue
- 10cm
- \$6.60 (FOB)
- Social enterprise: WomenCraft
- Made in: Tanzania
- Refugee origin: Burundi



INYABU GLASI COASTERS, SET OF 4

- Weaving / Papyrus, star grass, recycled grain sacks, cotton thread
- Available in black
- 10cm
- \$6.60 (FOB)
- Social enterprise: WomenCraft
- Made in: Tanzania
- Refugee origin: Burundi



IKIBA GLASI COASTERS, SET OF 4

- Weaving / Papyrus, star grass, recycled grain sacks, cotton thread
- Available in blue
- 10cm
- \$6.60 (FOB)
- Social enterprise: WomenCraft
- Made in: Tanzania
- Refugee origin: Burundi



DIAMOND TEA TOWELS, SET OF 2

- Block Printing / Linen-cotton blend
- 59cm x 45cm
- \$7.10 (Ex works)
- Social enterprise: Yadawee
- Made in: Egypt
- Refugee origin: Syria, Sudan, South Sudan and Ethiopia

Accessories





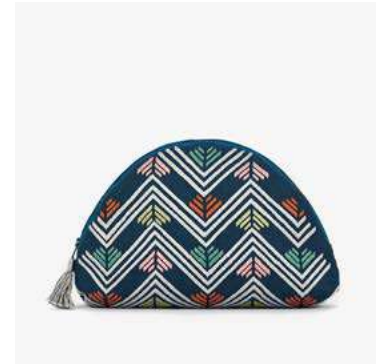
BLACK VICTORIAN PURSE

- Crochet / Linen, cotton, brass
- 20cm x 18cm
- \$30.06 (Ex works)
- Social enterprise: Archisha
- Made in: India
- Refugee origin: Afghanistan



WHITE VICTORIAN PURSE

- Crochet / Linen, cotton, brass
- 20cm x 18cm
- \$30.06 (Ex works)
- Social enterprise: Archisha
- Made in: India
- Refugee origin: Afghanistan



MOUNTAIN CLUTCH

- Embroidery / Cotton
- 15cm x 25cm
- \$15.50 (FOB)
- Social enterprise: Artisan Links
- Made in: Pakistan
- Refugee origin: Afghanistan



BLUE BURKA CLUTCH

- Embroidery / Polyester
- 18cm x 31cm
- \$18.50 (FOB)
- Social enterprise: Artisan Links
- Made in: Pakistan
- Refugee origin: Afghanistan



BURKA COIN PURSE

- Embroidery / Polyester
- 13cm x 11cm
- \$11.00 (FOB)
- Social enterprise: Artisan Links
- Made in: Pakistan
- Refugee origin: Afghanistan



KANDAHARI MAKE-UP / PENCIL CASE

- Embroidery / Cotton
- 21cm x 10cm
- \$6.60 (FOB)
- Social enterprise: Artisan Links
- Made in: Pakistan
- Refugee origin: Afghanistan



BLUE KANDAHARI TOTE

- Embroidery / Linen
- 39cm x 46cm
- \$13.00 (FOB)
- Social enterprise: Artisan Links
- Made in: Pakistan
- Refugee origin: Afghanistan



CREAM KANDAHARI TOTE

- Embroidery / Linen
- 39cm x 46cm
- \$13.00 (FOB)
- Social enterprise: Artisan Links
- Made in: Pakistan
- Refugee origin: Afghanistan



DIAMOND SHOULDER BAG

- Embroidery / Wool, acrylic, cotton thread
- 28cm x 22cm
- \$12.00 (FOB)
- Social enterprise: Artisan Links
- Made in: Pakistan
- Refugee origin: Afghanistan



DIAMOND SCARF

- Embroidery / Wool, acrylic, cotton thread
- 200cm x 74cm
- \$22.50 (FOB)
- Social enterprise: Artisan Links
- Made in: Pakistan
- Refugee origin: Afghanistan



MOUNTAINS SCARF

- Embroidery / Voile, cotton thread
- Available in grey
- 74cm x 186cm
- \$12.00 (FOB)
- Social enterprise: Artisan Links
- Made in: Pakistan
- Refugee origin: Afghanistan



EMBROIDERY PANEL BAG

- Crochet / Tyre tube
- 18cm x 28 cm
- \$9.25 (Ex Works)
- Social enterprise: Conserve
- Made in: India
- Refugee origin: Afghanistan



CROCHET SHOULDER STRAP BAG

- Crochet / Tyre tube
- 18cm x 28 cm
- \$10.00 (Ex Works)
- Social enterprise: Conserve
- Made in: India
- Refugee origin: Afghanistan



CROCHET WRIST STRAP BAG

- Crochet / Tyre tube
- 18cm x 28 cm
- \$9.25 (Ex Works)
- Social enterprise: Conserve
- Made in: India
- Refugee origin: Afghanistan



EMBROIDERY WRIST STRAP BAG

- Crochet / Tyre tube
- 18cm x 28 cm
- \$9.25 (Ex Works)
- Social enterprise: Conserve
- Made in: India
- Refugee origin: Afghanistan



NUUSUM CUFFLINKS

- Embroidery / Silver stainless steel, cotton thread
- 1.4cm x 1.2cm
- \$23.00 (FOB)
- Social enterprise: Earth Heir
- Made in: Malaysia
- Refugee origin: Syria, Afghanistan, Iran and Myanmar



DAUN CUFFLINKS

- Embroidery / Silver stainless steel, cotton thread
- 1.4cm x 1.2cm
- \$23.00 (FOB)
- Social enterprise: Earth Heir
- Made in: Malaysia
- Refugee origin: Syria, Afghanistan, Iran and Myanmar



EMBROIDERED UPCYCLED SAIL TOTE BAG

- Embroidery / Upcycled boat sails, excess seat belt straps, excess threads, polyester fabric, DUMC embroidery threads
- Embroidery can be customized in various colours and patterns
- 35cm x 45cm
- \$33.60 (FOB)
- Social enterprise: Earth Heir
- Made in: Malaysia
- Refugee origin: Syria, Afghanistan, Iran and Myanmar



Karen refugee artisans, Ei Meh (left) and Mee-meh (right) weaving beautiful silky smooth scarves on simple handlooms. Ei Meh and Mee-meh fled from Myanmar and live in Ban Mai Nai Soi refugee camp in Thailand where they work with MADE51 partner Weave ©UNHCR/ P Bronstein





BANANEIRA POUCH

- Weaving / Recycled t-shirts, banana fibre, leather & wood
- 24cm x 18cm
- \$17.00 (Ex works)
- Karingana Textiles
- Refugee origin: Mozambique
- DRC, Burundi and Rwanda



LIBERTAD CROSS-BODY BAG

- Patchwork / Natural cotton canvas, upcycled fabric, tagua seed buttons
- Patchwork fabric colours will vary
- 23cm x 36cm
- \$13.44 (FOB)
- Social enterprise: Kayamamas
- Made in: Ecuador
- Refugee origin: Venezuela



INDIGO BAG

- Embroidery / Handspun cotton
- 81cm x 81cm
- \$29.00 (FOB)
- Social enterprise: Koel
- Made in: Pakistan
- Refugee origin: Afghanistan



NATURAL DYED GREY BAG

- Embroidery / Handspun cotton
- 81cm x 81cm
- \$29.00 (FOB)
- Social enterprise: Koel
- Made in: Pakistan
- Refugee origin: Afghanistan



CIRCULAR PATTERNED SCARF

- Embroidery / Fine muslin cotton
- 53cm x 183cm
- \$23.00 (FOB)
- Social enterprise: Koel
- Made in: Pakistan
- Refugee origin: Afghanistan



TRADITIONAL KHOTRO MORAD CLUTCH

- Embroidery / Cotton, leather
- 20cm x 30cm
- \$51.77 (Ex works)
- Social enterprise: Pomegranate Seeds
- Made in: Pakistan
- Refugee origin: Afghanistan



TRADITIONAL KHOTRO NICHARA CLUTCH

- Embroidery / Cotton, leather
- 20cm x 30cm
- \$51.77 (Ex works)
- Social enterprise: Pomegranate Seeds
- Made in: Pakistan
- Refugee origin: Afghanistan



SUZANI PETAL VINES SCARF

- Embroidery / Muslin / mulmul, cotton
- Available with embroidered design in tones of blue
- 200cm x 65cm
- \$48.85 (Ex works)
- Social enterprise: Pomegranate Seeds
- Made in: Pakistan
- Refugee origin: Afghanistan



FARTUN SWAHILI STYLE SCARF

- Shibori dye / Cotton-rayon blend
- 80cm x 224cm
- \$14.47 (Ex Works)
- Social enterprise: RefuSHE
- Made in: Kenya
- Refugee origin: DRC, Ethiopia, Somalia and South Sudan



YVETTE BOUGAINVILLEA SCARF

- Shibori dye / Cotton-rayon blend
- 80cm x 224cm
- \$14.47 (Ex Works)
- Social enterprise: RefuSHE
- Made in: Kenya
- Refugee origin: DRC, Ethiopia, Somalia and South Sudan



INDIA POOLSIDE SCARF

- Shibori dye / Cotton-rayon blend
- 80cm x 224cm
- \$14.47 (Ex Works)
- Social enterprise: RefuSHE
- Made in: Kenya
- Refugee origin: DRC, Ethiopia, Somalia and South Sudan



ANGIE SEASIDE SCARF

- Shibori dye / Cotton-rayon blend
- 80cm x 224cm
- \$14.47 (Ex Works)
- Social enterprise: RefuSHE
- Made in: Kenya
- Refugee origin: DRC, Ethiopia, Somalia and South Sudan



NADIA SAND DRIFT SCARF

- Shibori dye / Cotton-rayon blend
- 80cm x 224cm
- \$14.47 (Ex Works)
- Social enterprise: RefuSHE
- Made in: Kenya
- Refugee origin: DRC, Ethiopia, Somalia and South Sudan



SMALL SISTERHOOD POUCH

- Embroidery / Linen & cotton
- S: 28cm x 17cm / L: 33cm x 25cm
- \$23.77 / \$27.07 (FOB)
- Social enterprise: Rim N' Roll
- Made in: Lebanon
- Refugee origin: Syria



LOVE BIRD POUCH

- Embroidery / Linen & cotton
- 27cm x 18cm
- \$12.92 (FOB)
- Social enterprise: Rim N' Roll
- Made in: Lebanon
- Refugee origin: Syria



ZERO-WASTE POUCH

- Stitching / Upcycled cotton
- Colours and patterns may vary.
- 20cm x 16cm
- \$5.00 (Ex works)
- Social enterprise: SilaiWali
- Made in: India
- Refugee origin: Afghanistan



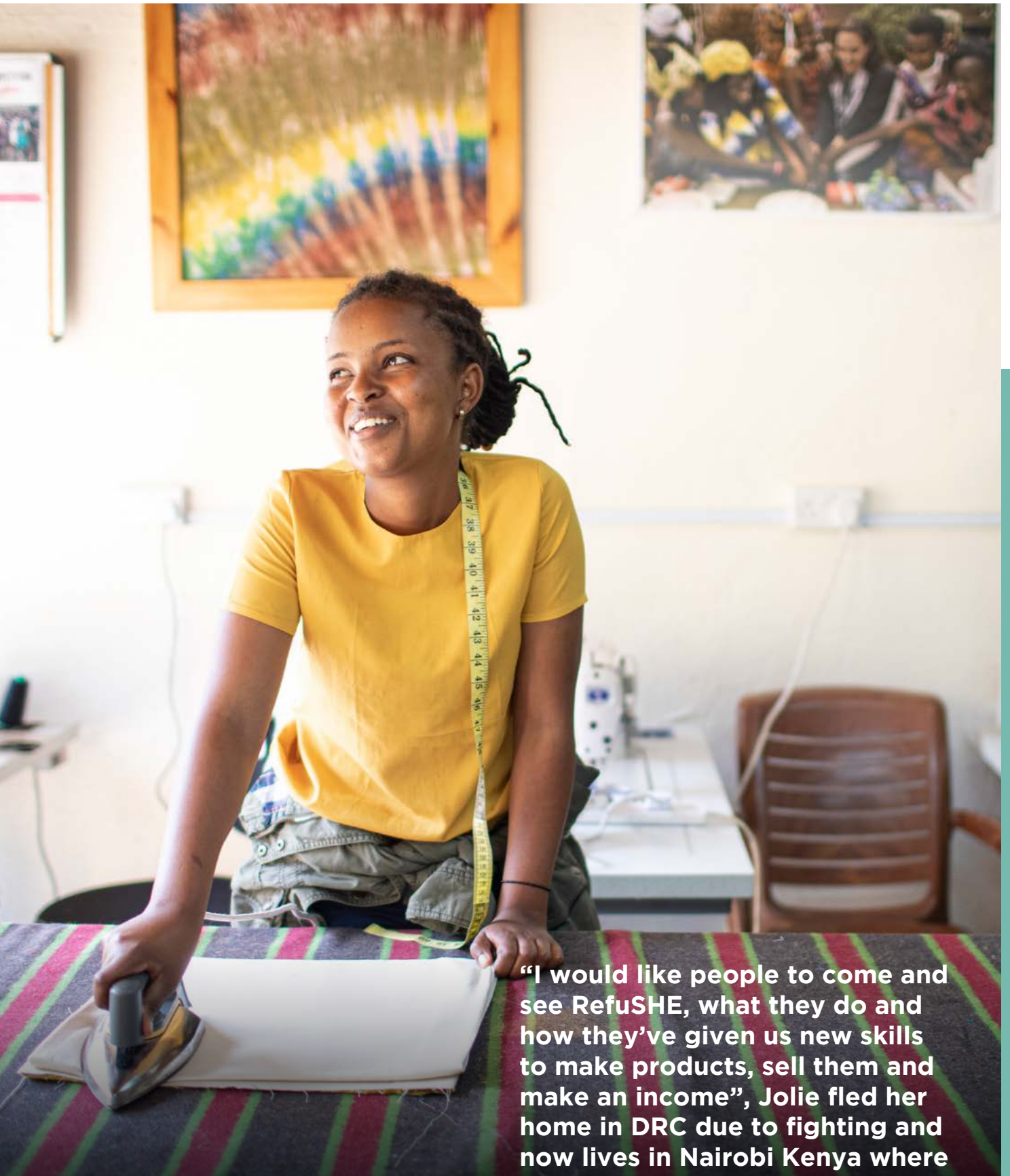
UPCYCLED FABRIC BAG

- Stitching / Upcycled cotton
- Colours and patterns may vary.
- 46cm x 43cm (Handle: 20cm)
- \$6.00 (Ex works)
- Social enterprise: SilaiWali
- Made in: India
- Refugee origin: Afghanistan



INFINITY SCARF

- Crochet & embroidery / Wool
- 38cm x 150cm
- \$26.00 (Ex works)
- Social enterprise: Tight Knit Syria
- Made in: Lebanon
- Refugee origin: Syria



“I would like people to come and see RefuSHE, what they do and how they’ve given us new skills to make products, sell them and make an income”, Jolie fled her home in DRC due to fighting and now lives in Nairobi Kenya where she works with MADE51 partner, RefuSHE. She depends on this income to pay her rent and living expenses

© UNHCR / W Swanson



DOUBLE INFINITY SCARF

- Crochet & embroidery / Wool
- 30cm x 70cm
- \$47.50 (Ex works)
- Social enterprise: Tight Knit Syria
- Made in: Lebanon
- Refugee origin: Syria



CLASSIC SCARF

- Crochet & embroidery / Wool
- 180cm x 20cm
- \$40.50 (Ex works)
- Social enterprise: Tight Knit Syria
- Made in: Lebanon
- Refugee origin: Syria



TRAVELER POUCH

- Embroidery / Upcycled billboard and boat cover material, cotton thread
- 14.5cm x 25.5cm
- 15.95 (FOB)
- Social enterprise: Waste Studio
- Made in: Lebanon
- Refugee origin: Syria



COIN POUCH

- Embroidery / Upcycled boat cover material and advertising banners, cotton thread
- 13.5cm x 9cm
- \$5.28 (FOB)
- Social enterprise: Waste Studio
- Made in: Lebanon
- Refugee origin: Syria



DOCUMENT / LAPTOP SLEEVE

- Embroidery / Upcycled boat cover material and advertising banners, cotton thread
- 33cm x 23cm
- \$7.08 (FOB)
- Social enterprise: Waste Studio
- Made in: Lebanon
- Refugee origin: Syria



CARD HOLDER / WALLET

- Embroidery / Upcycled boat cover material, inner tubing, and advertising banners, cotton thread
- 10.5cm x 8cm
- \$4.53 (FOB)
- Social enterprise: Waste Studio
- Made in: Lebanon
- Refugee origin: Syria



LUGGAGE TAG

- Embroidery / Upcycled boat cover material, inner tubing, and advertising banners, cotton thread
- 9.5cm x 6.8cm
- \$5.73 (FOB)
- Social enterprise: Waste Studio
- Made in: Lebanon
- Refugee origin: Syria



KAYIN POM BEACH BLANKET

- Handloom weaving / Naturally dyed, hand-woven cotton
- 170cm x 122cm
- \$58.59 (Ex Works)
- Social enterprise: Weave
- Made in: Thailand
- Refugee origin: Myanmar



KAYIN POM BEACH BAG

- Handloom weaving / Naturally dyed, hand-woven cotton
- Available in multiple colours
- 48cm x 52cm
- \$37.65 (Ex Works)
- Social enterprise: Weave
- Made in: Thailand
- Refugee origin: Myanmar



ROCK BOE MEH SCARF

- Hand-loom / Rayon derived from wood and cotton
- 54cm x 170cm
- \$25.50 (Ex Works)
- Social enterprise: Weave
- Made in: Thailand
- Refugee origin: Myanmar



EARTH BOE MEH SCARF

- Hand-loom / Rayon derived from wood and cotton
- 54cm x 170cm
- \$25.50 (Ex Works)
- Social enterprise: Weave
- Made in: Thailand
- Refugee origin: Myanmar



RIVER BOE MEH SCARF

- Hand-loom / Rayon derived from wood and cotton
- 54cm x 170cm
- \$25.50 (Ex Works)
- Social enterprise: Weave
- Made in: Thailand
- Refugee origin: Myanmar



SEA BOE MEH SCARF

- Hand-loom / Rayon derived from wood and cotton
- 54cm x 170cm
- \$25.50 (Ex Works)
- Social enterprise: Weave
- Made in: Thailand
- Refugee origin: Myanmar



SKY BOE MEH SCARF

- Hand-loom / Rayon derived from wood and cotton
- 54cm x 170cm
- \$25.50 (Ex Works)
- Social enterprise: Weave
- Made in: Thailand
- Refugee origin: Myanmar



STONE BOE MEH SCARF

- Hand-loom / Rayon derived from wood and cotton
- 54cm x 170cm
- \$25.50 (Ex Works)
- Social enterprise: Weave
- Made in: Thailand
- Refugee origin: Myanmar



SAGE GREEN BLOCK SCARF

- Block printing / Linen-cotton blend
- Available in sand and light grey
- 200cm x 80cm
- \$19.82 (Ex works)
- Social enterprise: Yadawee
- Made in: Egypt
- Refugee origin: Syria, Sudan, South Sudan and Eritrea



MEADOW APRON

- Block printing / Linen-cotton blend
- Available in multiple colours
- 90cm x 70cm
- \$9.02 (Ex works)
- Social enterprise: Yadawee
- Made in: Egypt
- Refugee origin: Syria, Sudan, South Sudan and Eritrea



DANDELION APRON

- Block printing / Linen-cotton blend
- Available in multiple colours
- 90cm x 70cm
- \$9.02 (Ex works)
- Social enterprise: Yadawee
- Made in: Egypt
- Refugee origin: Syria, Sudan, South Sudan and Ethiopia



DIAMOND APRON WITH NECK LEATHER STRAPS

- Block printing / Linen-cotton blend, leather neck straps
 - Available in multiple colours
 - 100cm x 70cm
 - \$12.55 (FOB)
 - Social enterprise: Yadawee
 - Made in: Egypt
 - Refugee origin: Syria, Sudan, South Sudan and Eritrea
-



Dolls & Gifts



**QITH THE CAT**

- Crochet / Organic cotton
- H18cm
- \$13.70 (FOB)
- Social enterprise: Bebemoss
- Made in: Turkey
- Refugee origin: Syria

**ASWADOO THE CROW**

- Crochet / Organic cotton
- H18cm
- \$13.70 (FOB)
- Social enterprise: Bebemoss
- Made in: Turkey
- Refugee origin: Syria

**THALABOO THE FOX**

- Crochet / Organic cotton
- H18cm
- \$13.70 (FOB)
- Social enterprise: Bebemoss
- Made in: Turkey
- Refugee origin: Syria

**FARAWEE THE SHEEP**

- Crochet / Organic cotton
- H18cm
- \$13.70 (FOB)
- Social enterprise: Bebemoss
- Made in: Turkey
- Refugee origin: Syria

**FINGER PUPPETS, SET OF 4**

- Crochet / Organic cotton
- H11cm
- \$14.00 (Ex Works)
- Social enterprise: Bebemoss
- Made in: Turkey
- Refugee origin: Syria

**QITH THE CAT WALL HANGER**

- Crochet / Organic cotton
- 40cm x 40cm
- \$17.14 (Ex Works)
- Social enterprise: Bebemoss
- Made in: Turkey
- Refugee origin: Syria



THALABOO THE FOX WALL HANGER

- Crochet / Organic cotton
- 40cm x 40cm
- \$17.14 (Ex Works)
- Social enterprise: Bebemoss
- Made in: Turkey
- Refugee origin: Syria



FARAWEE THE SHEEP WALL HANGER

- Crochet / Organic cotton
- 40cm x 40cm
- \$17.14 (Ex Works)
- Social enterprise: Bebemoss
- Made in: Turkey
- Refugee origin: Syria



RED SILK HEART KEY RING

- Embroidery & Sewing / Polyester silk fabric, mizuki beads, cotton thread
- 7cm x 7.5cm
- \$7.20 (FOB)
- Social enterprise: Earth Heir
- Made in: Malaysia
- Refugee origin: Syria, Afghanistan, Iran and Myanmar



FRIDA

- Stitching / Upcycled cotton
- Colours and patterns may vary.
- 47cm x 13cm
- \$18.00 (Ex works)
- Social enterprise: SilaiWali
- Made in: India
- Refugee origin: Afghanistan



MINI FRIDA

- Stitching / Upcycled cotton
- Colours and patterns may vary.
- 23cm x 7cm
- \$16.00 (Ex works)
- Social enterprise: SilaiWali
- Made in: India
- Refugee origin: Afghanistan



FRIDA MOM & ME

- Stitching / Upcycled cotton
- Colours and patterns may vary.
- Mom: 47cm x 13cm, Mini: 23cm x 7cm
- \$33.00 (Ex works)
- Social enterprise: SilaiWali
- Made in: India
- Refugee origin: Afghanistan



“I was so excited when I heard about this work opportunity. Because I am staying at home, I don’t have many opportunities to socialize. When I came to the atelier I made friends, I learned how to knit, it gave me a sense of importance. I felt valuable”, Neriman is a refugee artisan from Syria working with MADE51 partner Bebemoss in Turkey.

© Beril Topper



SOUMBA

- Stitching / Upcycled cotton
- Colours and patterns may vary.
- 47cm x 13cm
- \$18.00 (Ex works)
- Social enterprise: SilaiWali
- Made in: India
- Refugee origin: Afghanistan



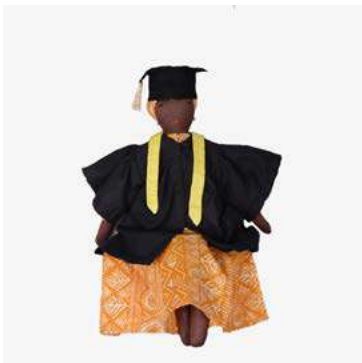
MINI SOUMBA

- Stitching / Upcycled cotton
- Colours and patterns may vary.
- 23cm x 7cm
- \$16.00 (Ex works)
- Social enterprise: SilaiWali
- Made in: India
- Refugee origin: Afghanistan



SOUMBA MOM & ME

- Stitching / Upcycled cotton
- Colours and patterns may vary.
- Mom: 47cm x 13cm, Mini: 23cm x 7cm
- \$33.00 (Ex works)
- Social enterprise: SilaiWali
- Made in: India
- Refugee origin: Afghanistan



GRADUATION SOUMBA

- Stitching / Upcycled cotton
- Colours and patterns may vary.
- 47cm x 13cm
- \$20.00 (Ex works)
- Social enterprise: SilaiWali
- Made in: India
- Refugee origin: Afghanistan



NARGIS

- Stitching / Upcycled cotton
- Colours and patterns may vary.
- 47cm x 13cm
- \$18.00 (Ex works)
- Social enterprise: SilaiWali
- Made in: India
- Refugee origin: Afghanistan



NARGIS MOM & ME

- Stitching / Upcycled cotton
- Colours and patterns may vary.
- Mom: 47cm x 13cm, Mini: 23cm x 7cm
- \$33.00 (Ex works)
- Social enterprise: SilaiWali
- Made in: India
- Refugee origin: Afghanistan



GRADUATION NARGIS

- Stitching / Upcycled cotton
- Colours and patterns may vary.
- 47cm x 13cm
- \$20.00 (Ex works)
- Social enterprise: SilaiWali
- Made in: India
- Refugee origin: Afghanistan



NEELU

- Stitching / Upcycled cotton
- Colours and patterns may vary.
- 47cm x 13cm
- \$18.00 (Ex works)
- Social enterprise: SilaiWali
- Made in: India
- Refugee origin: Afghanistan



MAMBA

- Stitching / Upcycled cotton
- Colours and patterns may vary.
- 47cm x 13cm
- \$18.00 (Ex works)
- Social enterprise: SilaiWali
- Made in: India
- Refugee origin: Afghanistan



KOM

- Stitching / Upcycled cotton
- Colours and patterns may vary.
- 47cm x 13cm
- \$18.00 (Ex works)
- Social enterprise: SilaiWali
- Made in: India
- Refugee origin: Afghanistan



GRADUATIONI KOM

- Stitching / Upcycled cotton
- Colours and patterns may vary.
- 47cm x 13cm
- \$20.00 (Ex works)
- Social enterprise: SilaiWali
- Made in: India
- Refugee origin: Afghanistan

Jewellery





GOLD SMALL LACE EARRINGS

- Crochet / Metal loop, zari or cotton thread, brass beads
- Available in gold, silver, navy and black
- Ø4cm
- \$12.70 (Ex works)
- Social enterprise: Archisha
- Made in: India
- Refugee origin: Afghanistan



GOLD LACE EARRINGS

- Crochet / Metal loop, zari or cotton thread, brass beads
- Available in gold, silver, navy and black
- Ø7cm
- \$14.00 (Ex works)
- Social enterprise: Archisha
- Made in: India
- Refugee origin: Afghanistan



GOLD SMALL CRESCENT EARRINGS

- Crochet / Metal loop, zari or cotton thread, brass beads
- Available in gold, silver, navy and black
- Ø4cm
- \$12.70 (Ex works)
- Social enterprise: Archisha
- Made in: India
- Refugee origin: Afghanistan



GOLD CRESCENT EARRINGS

- Crochet / Metal loop, zari or cotton thread, brass beads
- Available in gold, silver, navy and black
- Ø7cm
- \$14.00 (Ex works)
- Social enterprise: Archisha
- Made in: India
- Refugee origin: Afghanistan



NAVY SMALL CRESCENT EARRINGS

- Crochet / Metal loop, zari or cotton thread, brass beads
- Available in gold, silver, navy and black
- Ø4cm
- \$12.70 (Ex works)
- Social enterprise: Archisha
- Made in: India
- Refugee origin: Afghanistan



NAVY CRESCENT EARRINGS

- Crochet / Metal loop, zari or cotton thread, brass beads
- Available in gold, silver, navy and black
- Ø7cm
- \$14.00 (Ex works)
- Social enterprise: Archisha
- Made in: India
- Refugee origin: Afghanistan



BLACK WEB EARRINGS

- Crochet / Metal loop, zari or cotton thread, brass beads
- Available in gold, silver, navy and black
- Ø4cm
- \$12.70 (Ex works)
- Social enterprise: Archisha
- Made in: India
- Refugee origin: Afghanistan



BLACK WEB EARRINGS

- Crochet / Metal loop, zari or cotton thread, brass beads
- Available in gold, silver, navy and black
- Ø7cm
- \$14.00 (Ex works)
- Social enterprise: Archisha
- Made in: India
- Refugee origin: Afghanistan



SLIM HOOP EARRINGS

- Crochet / Metal loop, zari or cotton thread, brass beads
- 6cm x 3.5cm
- \$12.00 (Ex works)
- Social enterprise: Archisha
- Made in: India
- Refugee origin: Afghanistan



CORAL & BLUE BEADED BRACELET

- Metal-casting & beading / Glass beads, brass, cotton thread
- 1cm x 15cm
- \$5.00 (FOB)
- Social enterprise: Bawa Hope
- Made in: Kenya
- Refugee origin: South Sudan



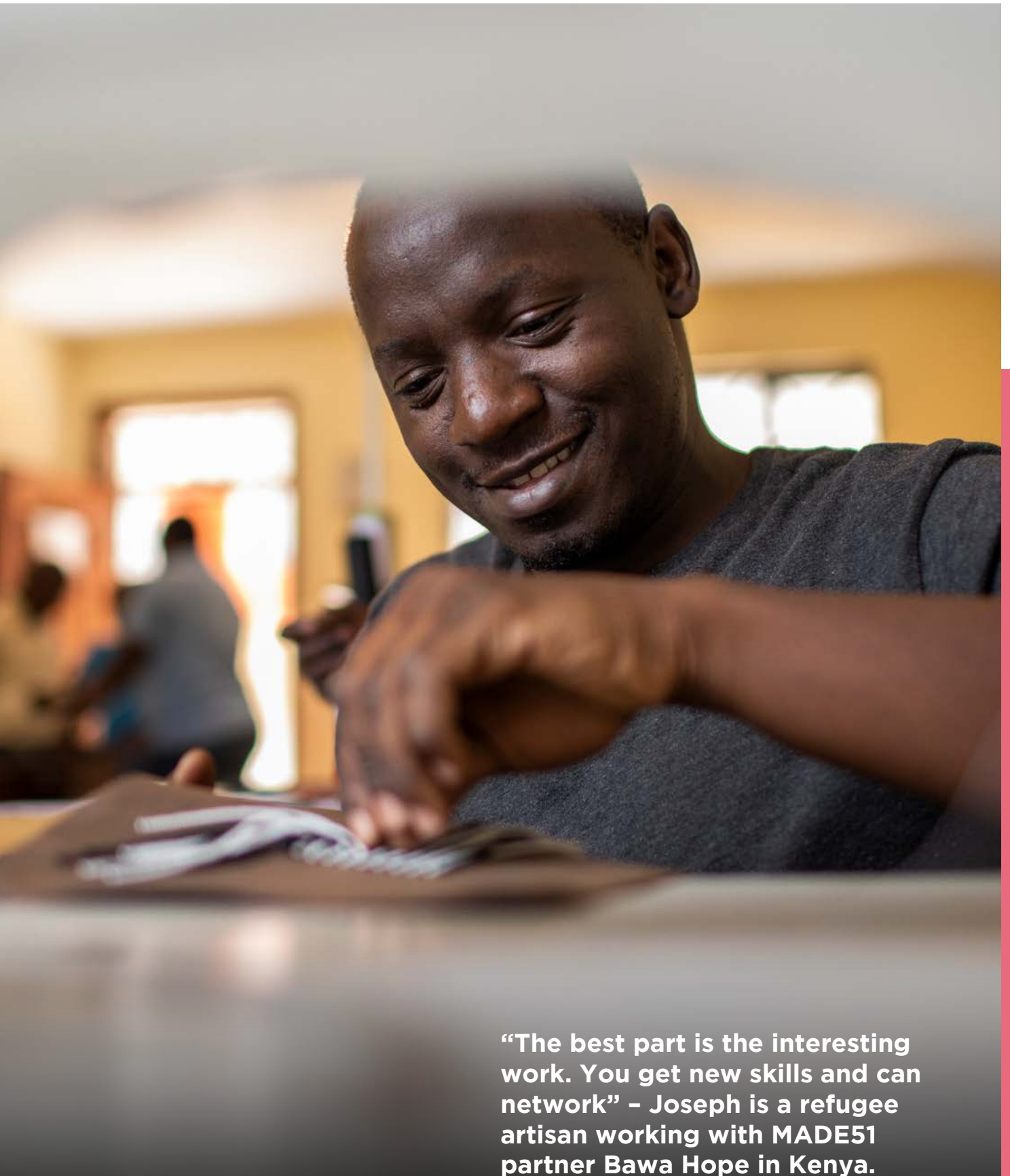
GREY & PINK BEADED BRACELET

- Metal-casting & beading / Glass beads, brass, cotton thread
- 1cm x 15cm
- \$5.00 (FOB)
- Social enterprise: Bawa Hope
- Made in: Kenya
- Refugee origin: South Sudan



WHITE & PINK SHORT DIAMOND BEADED BRACELET

- Metal-casting & beading / Glass beads, brass, cotton thread
- 1cm x 18cm
- \$5.00 (FOB)
- Social enterprise: Bawa Hope
- Made in: Kenya
- Refugee origin: South Sudan



“The best part is the interesting work. You get new skills and can network” - Joseph is a refugee artisan working with MADE51 partner Bawa Hope in Kenya.

Refugee artisans from East Africa use traditional beading techniques to create beautiful, authentic pieces.

© Will Swanson





TERRACOTTA & PINK SHORT DIAMOND BRACELET

- Metal-casting & beading / Glass beads, brass, cotton thread
- 1cm x 18cm
- \$5.00 (FOB)
- Social enterprise: Bawa Hope
- Made in: Kenya
- Refugee origin: South Sudan



DAUN DOUBLE HOOP EARRINGS

- Embroidery / Stainless steel, cotton thread
- Available in the following embroidery designs: Arabesque, Nuusum, California and Amour. Available in: blue, black, green pink and red
- 4.5cm x 2.2cm
- \$21.50 (FOB)
- Social enterprise: Earth Heir
- Made in: Malaysia
- Refugee origin: Syria, Afghanistan, Iran and Myanmar



DAUN RECTANGLE NECKLACE

- Embroidery / Stainless steel, cotton thread
- Available in silver base and in blue, black, pink and teal
- 1cm x 3cm / 56cm chain
- \$24.00 (FOB)
- Social enterprise: Earth Heir
- Made in: Malaysia
- Refugee origin: Syria, Afghanistan, Iran and Myanmar



NUUSUM BLUE RING

- Embroidery / Stainless steel, cotton thread
- Available in the following embroidery designs: Arabesque, Nuusum, California and Amour. Available in: black, green pink and teal
- Ø18mm x W:1.5cm
- \$16.00 (FOB)
- Social enterprise: Earth Heir
- Made in: Malaysia
- Refugee origin: Syria, Afghanistan, Iran and Myanmar



NUUSUM BLUE DOUBLE CIRCLE EARRINGS

- Embroidery / Stainless steel, cotton thread
- Available in the following embroidery designs: Arabesque, Nuusum and California. Available in: black, green and pink
- 4.5cm x 2.2cm
- \$36.00 (FOB)
- Social enterprise: Earth Heir
- Made in: Malaysia
- Refugee origin: Syria, Afghanistan, Iran and Myanmar



NUUSUM BLUE STUD EARRINGS

- Embroidery / Stainless steel, cotton thread
- Available in the following embroidery designs: Arabesque, California and Daun. Available in: black, green, pink and teal
- 1cm x 1.4cm
- \$19.50 (FOB)
- Social enterprise: Earth Heir
- Made in: Malaysia
- Refugee origin: Syria, Afghanistan, Iran and Myanmar



NUUSUM BLUE ROUND NECKLACE

- Embroidery / Stainless steel, cotton thread
- Ø1.8cm / 45cm chain
- \$23.50 (FOB)
- Social enterprise: Earth Heir
- Made in: Malaysia
- Refugee origin: Syria, Afghanistan, Iran and Myanmar



ARABESQUE BLUE DOUBLE CIRCLE EARRINGS

- Embroidery / Stainless steel, cotton thread
- Available in the following embroidery designs: Nuusum, California and Daun. Available in: black, green and pink
- 4.5cm x 2.2cm
- \$36.00 (FOB)
- Social enterprise: Earth Heir
- Made in: Malaysia
- Refugee origin: Syria, Afghanistan, Iran and Myanmar



ARABESQUE BLUE STUD EARRINGS

- Embroidery / Stainless steel, cotton thread
- Available in the following embroidery designs: Nuusum, California and Daun. Available in: black, green, pink and teal
- 1cm x 1.4cm
- \$19.50 (FOB)
- Social enterprise: Earth Heir
- Made in: Malaysia
- Refugee origin: Syria, Afghanistan, Iran and Myanmar



CALIFORNIA DOUBLE CIRCLE EARRINGS

- Embroidery / Stainless steel, cotton thread
- Available in the following embroidery designs: Nuusum, Arabesque and Daun. Available in: black, blue and green
- 4.5cm x 2.2cm
- \$36.00 (FOB)
- Social enterprise: Earth Heir
- Made in: Malaysia
- Refugee origin: Syria, Afghanistan, Iran and Myanmar



CALIFORNIA STUD EARRINGS

- Embroidery / Stainless steel, cotton thread
- Available in the following embroidery designs: Nuusum, Arabesque and Daun. Available in: blue, black, green and teal
- 1cm x 1.4cm
- \$19.50 (FOB)
- Social enterprise: Earth Heir
- Made in: Malaysia
- Refugee origin: Syria, Afghanistan, Iran and Myanmar



CALIFORNIA ROUND NECKLACE

- Embroidery / Stainless steel, cotton thread
- Ø1.8cm / 45cm chain
- \$23.50 (FOB)
- Social enterprise: Earth Heir
- Made in: Malaysia
- Refugee origin: Syria, Afghanistan, Iran and Myanmar



**“ I am glad to be able to support my family through my skill-set. Besides, working together with other women in a group makes me feel less alone”
- Khaleda an Afghan refugee artisan living in India working with MADE51 partner, Archisha.**

© UNHCR/Sediqa Rezaie





TEAL RING

- Embroidery / Stainless steel, cotton thread
- Available in the following embroidery designs: Arabesque, Nuusum, California and Amour. Available in: blue, black, green and pink
- Ø18mm x W:1.5cm
- \$16.00 (FOB)
- Social enterprise: Earth Heir
- Made in: Malaysia
- Refugee origin: Syria, Afghanistan, Iran and Myanmar



TEAL DOUBLE HOOP EARRINGS

- Embroidery / Stainless steel, cotton thread
- Available in the following designs: Arabesque, Nuusum, California and Amour. Available in: blue, black, green pink and red
- 4.5cm x 2.2cm
- \$21.50 (FOB)
- Social enterprise: Earth Heir
- Made in: Malaysia
- Refugee origin: Syria, Afghanistan, Iran and Myanmar



TEAL STUD EARRINGS

- Embroidery / Stainless steel, cotton thread
- Available in the following embroidery designs: Nuusum, Arabesque, California and Daun. Available in: blue, black, green and pink
- 1cm x 1.4cm
- \$19.50 (FOB)
- Social enterprise: Earth Heir
- Made in: Malaysia
- Refugee origin: Syria, Afghanistan, Iran and Myanmar



TEAL CUFF

- Embroidery / Stainless steel, cotton thread
- Available in blue, light blue and pink
- \$28.50 (FOB)
- Social enterprise: Earth Heir
- Made in: Malaysia
- Refugee origin: Syria, Afghanistan, Iran and Myanmar



BLACK & WHITE DOUBLE LOOP EARRINGS

- Beading / Glass beads
- Large hoop: 4.5cm, Small hoop: 3.5cm
- \$7.50 (Ex works)
- Social enterprise: Roots
- Made in: South Sudan
- Refugee origin: Internally displaced South Sudanese



BLACK & WHITE DOUBLE DISK EARRINGS

- Beading / Glass beads
- Large disc: 4.5cm, Small disc: 3cm
- \$7.50 (Ex works)
- Social enterprise: Roots
- Made in: South Sudan
- Refugee origin: Internally displaced South Sudanese



BLACK & WHITE KNITTED COLUMN EARRINGS

- Beading / Glass bead
- 4cm
- \$6.50 (Ex works)
- Social enterprise: Roots
- Made in: South Sudan
- Refugee origin: Internally displaced South Sudanese



ROSE BEADED NECKLACE

- Beadwork / Glass beads
- L70cm
- \$13.36 (Ex works)
- Social enterprise: Roots
- South Sudan
- Internally displaced South Sudanese

CONTACT DETAILS OF FEATURED MADE51 SOCIAL ENTERPRISE PARTNERS**ARCHISHA**

- India
- www.facebook.com/ArchishaEmpowerment
- Shradha Vedbrat
- info@archisha.co
- MOQ: \$500 USD
- Ships from: Delhi, India
- Exports to: Australia, UK, USA, Switzerland

ARTISAN LINKS

- Pakistan
- www.artisanlinks.com
- Tahira Afridi
- zardozitahira@gmail.com
- MOQ: \$1,500 USD
- Ships from: Peshawar, Pakistan
- Exports to: USA, UK, EU, UAE, Australia

BAWA HOPE

- Kenya
- www.bawahope.com
- Andrew Mutisya
- andrew_mutisya@bawahope.com
- MOQ: \$500 USD
- Ships from: Nairobi, Kenya
- Exports to: EU, USA, Australia, Japan

BEBEMOSS

- Turkey
- www.bebemoss.com
- Izabela Ersahin
- iza@bebemoss.com
- MOQ: \$500 USD
- Ships from: Istanbul, Turkey
- Exports to: USA, EU, Australia, Asia

CONSERVE

- India
- www.conserveindia.org
- Anita Ahuja
- anita@conserveindia.org
- MOQ: \$1,500 USD
- Ships from: Delhi, India
- Exports to: EU, USA

EARTH HEIR

- Malaysia
- www.earthheir.com
- Sasibai Kimis
- team@earthheir.com
- MOQ: \$1,500 USD
- Ships from: Kuala Lumpur, Malaysia
- Exports to: USA, Japan, UK, EU, Canada, ASEAN and Australia

INDEGO AFRICA

- Rwanda and USA
- www.indegoafrica.org
- Sapna Shah
- sapna.shah@indegoafrica.org
- MOQ: \$500 USD
- Ships from: New York, USA
- Exports to: USA, UK, Japan, Canada, EU, UAE

KARINGANA

- Mozambique
- <https://www.facebook.com/karinganatextiles/>
- Wacy Zacarias
- wacy@changingnarratives.design
- MOQ: \$1,500 USD
- Ships from: Maputo, Mozambique
- Exports to: USA, South Africa and EU

LSE CONTACT DETAILS

KAYAMAMAS

- Ecuador
- www.kayamamas.com
- Maria Puente Silva
- maria@kayamamas.com
- MOQ: \$1,500 USD
- Ships from: Quito, Ecuador
- Exports to: USA, EU

KOEL

- Pakistan
- <https://koel.com.pk/>
- Sarah Faruqui
- sarahfaruqui@gmail.com
- MOQ: \$500 USD
- Ships from: Karachi, Pakistan
- Exports to: USA, Canada, UK, Japan

POMEGRANATE SEEDS

- Pakistan
- <https://pomegranateseeds.com.pk/>
- Nimra Umar
- nimzibb@gmail.com
- MOQ: \$1,730 USD
- Ships from: Quetta, Pakistan
- Exports to: Asia, UK

REFUSHE

- Kenya and USA
- www.refushe.org
- Shelby Quackenbush
- squackenbush@refushe.org
- MOQ: \$500 USD
- Ships from: Nairobi, Kenya (price as listed) or Chicago, USA (wholesale prices upon request)
- Exports to: USA, EU, Africa, South America, Asia

RIM N' ROLL

- Lebanon
- www.rimnroll.com
- Roula Bohsali
- roulabohsali@gmail.com
- MOQ: \$500 USD
- Ships from: Beirut, Lebanon
- Exports to: USA, Japan, South Korea, Middle East, Egypt

ROOTS

- South Sudan
- www.rootsofsouthsudan.org
- Anyieth D'Awol
- msdawol@hotmail.com
- MOQ: \$500 USD
- Ships from: Juba, South Sudan
- Exports to: USA

SILAIWALI

- India
- www.silaiwali.com
- Bishwadeep Moitra
- info@silaiwali.com
- MOQ: \$500 USD
- Ships from: Delhi, India
- Exports to: EU, UK, Switzerland, USA, Australia, Japan, South Korea and Singapore

TIGHT-KNIT SYRIA

- Lebanon
- www.tightknitsyria.com
- Dana Kanalaft
- dana@tightknitsyria.com
- MOQ: \$500 USD
- Ships from: Beirut, Lebanon
- Exports to: USA, Canada, EU

LSE CONTACT DETAILS

TRIBAL TEXTILES

- Zambia
- tribaltextiles.co.zm
- Kirstie Selfe
- kirstie@tribaltextiles.co.zm
- MOQ: \$500 USD to buy stock available for immediate dispatch. No MOQ
- Ships from: Lusaka, Zambia
- Exports to: North America, EU, Asia and Africa

WASTE STUDIO

- Lebanon
- www.waste.studio
- Waleed Jad
- waleed@waste.studio
- MOQ: \$1,200 USD
- Ships from: Beirut, Lebanon
- Exports to: EU, Middle East, Japan

WEAVE WOMEN

- Thailand
- www.weave-women.org
- Umaporn Pojorn (Ms. Mong)
- mong@weave-women.org
- MOQ: \$1,500 USD
- Ships from: Chiang Mai, Thailand
- Exports to: EU, Australia

WOMENCRAFT

- Tanzania
- www.womencraft.org
- Kara Hook
- sales@womencraft.org
- MOQ: \$1,000 USD
- Ships from: Kigali, Rwanda (price as listed) or Michigan, USA (wholesale price list upon request)
- Exports to: Australia, EU, USA, Asia, South Exports to: America, Middle East

YADAWEE

- Egypt
- www.yadawee.com
- Hisham El Gazzar
- gazzar@yadawee.com
- MOQ: \$1,500 USD
- Ships from: Cairo, Egypt
- Exports to: USA, EU, UK



MADE51

CRAFTED BY REFUGEES



UNHCR
The UN Refugee Agency

94 rue de Montbrillant
1202 Geneva
Switzerland